



Compared to Microsoft Exchange

*Evaluating MDaemon as a more economical,
more secure, easier to use messaging platform.*

Alt-N Technologies, Ltd.
2550 SW Grapevine Parkway
Grapevine, TX 76051
Tel: (817) 601-3222
<http://www.altn.com>

Copyright 1995-2006 Alt-N Technologies.

Table of Contents

Abstract.....	3
MDaemon Over Exchange	4
Cost of Ownership	4
Resource Requirements	4
Security Leadership	5
MDaemon as the Exchange Alternative.....	6
Integration with Outlook	6
Supplying Equivalent Functions.....	6
MDaemon & Exchange Features Comparison	8
General Features	8
Features Table.....	8
MDaemon Goals and Benefits.....	13

Abstract

From the account holder's point of view, MDAemon and Microsoft Exchange are similar in features and functions. Both provide SMTP, POP, IMAP and web mail services. Each has some features lacking in the other, but these are mostly inconsequential to the user.

To the messaging platform owner and administrator, MDAemon is both easier to use and more economical than Exchange. As standalone software, MDAemon is also more secure.

Some of the features of MDAemon described in this document are available only in MDAemon PRO and not in MDAemon Standard. See the MDAemon section of the Alt-N Technologies web site (<http://www.altn.com/>) for a complete features list.

MDaemon Over Exchange

Cost of Ownership

One of the primary reasons to consider MDAemon over Microsoft Exchange is the *Total Cost of Ownership* (TCO).

The TCO encompasses all elements of ownership.

It consists of both direct and peripheral expenses of items such as:

- Initial Software
- Upgrades
- Licensing
- Operations
- Feature set
- Administration ease of use
- User support
- User satisfaction
- Specialized staffing needs
- Operating system requirements
- Hardware requirements

In all of these areas, MDAemon is equivalent or superior to Exchange for installations of one user to several thousand.

Resource Requirements

While Exchange is an able product, it is also resource-intensive, plus technically-complex to deploy and operate.

Typically, the hardware and operating requirements for Exchange intensify with each new release. Each new version often requires the purchase of a new Microsoft operating system, meaning you also may need a new computer with greater power.

From a staffing point-of-view, Exchange usually requires highly-trained fulltime support. One or more highly-paid IT professionals are often beyond the means of budget-conscious organizations. Such salary support can add tens of thousands of dollars (U.S.) to the annual cost of operating your server.

Also, the standard version of Exchange for smaller applications quickly falls short as traffic increases. Standard Exchange has artificially imposed ceilings in both its maximum number of accounts and its maximum disk storage.

“ . . . whole books have been devoted to managing and troubleshooting the Microsoft software. . . ”

*Personal Computer World,
February 2004*

MDaemon is “a real alternative to Exchange and a role model for the others. . . ”

*Personal Computer World,
February 2004*

“Despite the complex scenarios that can be involved in initially setting up a mail server, Alt-N has simplified the choices to those most vital, and chooses intelligent defaults otherwise. . . ”

ServerWatch, June 2004

When your needs surpass these limitations you must move to Exchange Professional with even more complex and expensive requirements.

As an alternative, consider the much more reasonable MDAemon. Alone, or with its plug-in applications—such as Outlook Connector or AntiVirus for MDAemon—MDaemon provides professional messaging services with much more relaxed requirements for hardware, software, daily operations, technical assistance and overall costs.

Security Leadership

MDaemon is an industry leader and trendsetter in email security. It has built-in protections to stop unauthorized use, detect spam and neutralize viruses. MDAemon was the first Windows-based email server to deploy DomainKeys, DKIM, HashCash and SPF.

It has also taken a leadership role in implementing Sender ID to help control spoofing and phishing. Plus, it offers many other security measures such as address suppression, greylisting, tarpitting and relaying controls. Many security measures can be both global for all access or specific to IP addresses, domains and email addresses.

In fact, because MDAemon so successfully resists attacks from spam, hackers and viruses, it is sometimes used as a security front-end to protect large Exchange installations.

Exchange has some security benefits but as a standalone server Exchange is less secure than MDAemon.

“While most email server vendors boast that they adequately protect end users from the spam onslaught, few can out-maneuver spammers as well as Alt-N’s MDAemon e-mail server. . . .”

CRN, March 2004

MDaemon as the Exchange Alternative

Enterprises use MDAemon as an alternative to Microsoft Exchange in two different ways—integration with Outlook and supplying equivalent functions.

Integration with Outlook

People often use Exchange because of its integration with Microsoft Outlook. Outlook is a personal information management tool supplied with Microsoft Office. It supports the group sharing of email, calendars, contacts and tasks.

On the negative side, Exchange's sharing capabilities are mostly proprietary, sometimes making interchange with the outside world difficult.

Outlook Connector for MDAemon, a separately licensed plug-in product—and still more economical than Exchange—unlocks the collaborative potential of Microsoft Outlook by using MDAemon, rather than Exchange Server, as the messaging platform. It frees Outlook from the constraints and costs of Microsoft Exchange.

An account enabled with Outlook Connector makes Outlook folders function similarly with MDAemon as they do with Exchange.

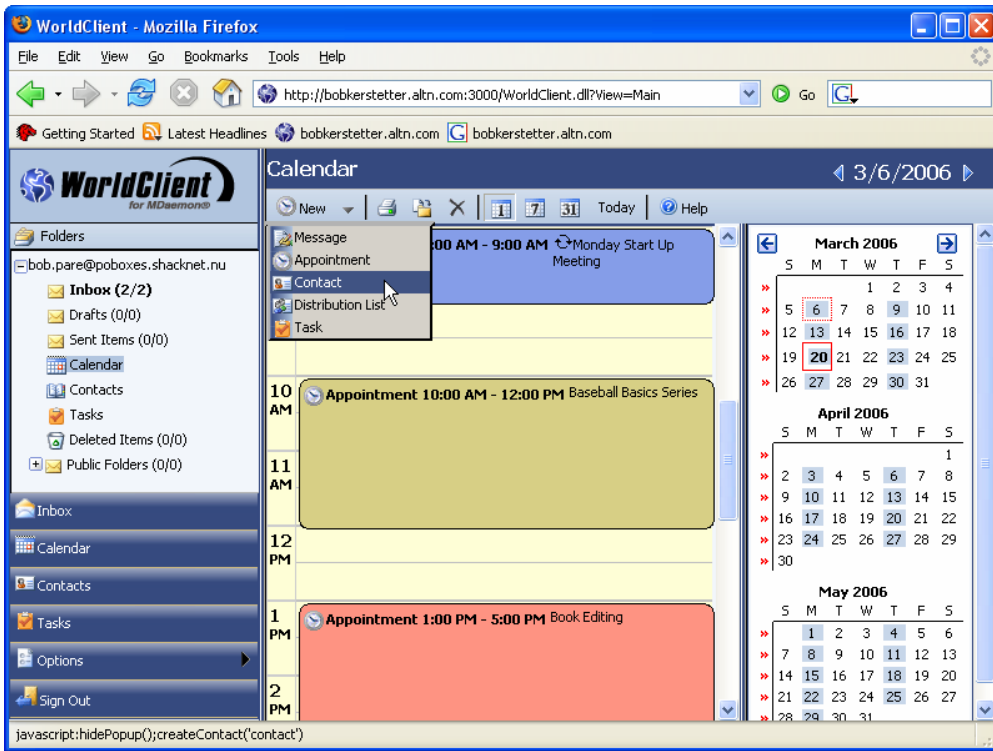
Supplying Equivalent Functions

For most applications and from an account user's point of view, MDAemon and Exchange offer equivalent functions. Both supply the basic services of a messaging platform—email, mailing lists and groupware functions.

Consider, for example, groupware capabilities such as shared calendars, tasks, contacts and email folders. In its professional version, MDAemon's WorldClient web mail application supplies all of these functions without the need for Exchange or Outlook. WorldClient users can share their calendars, tasks, contacts and email folders with other users.

"After looking into other products, like Exchange Server, MDAemon was chosen for its price/performance ratio. It was only after we had already installed the software that we became aware of the EXCELLENT level of support. . ."

*Shawn D. Silvas
Support Engineer, Magnasync*



WorldClient Offers Groupware Functions

Over the past several years, MDAemon has become a viable alternative to Exchange for cost-aware organizations seeking ways to minimize expenses.

MDaemon & Exchange Features Comparison

General Features

Both MDAemon and Exchange are feature-rich, offering basic POP, IMAP, SMTP, web mail and groupware services. (In addition MDAemon comes with a SyncML server for synchronizing calendars, contacts, and tasks with SyncML capable clients such as PIM's and iPods.) You can access email from both servers by using standard email clients, web mail and wireless devices, such as the Palm and the Pocket PC.

MDaemon makes its features available through an interface of easy-to-use menus and options. Exchange configuration requires navigating through complex nested dialogs.

“... the software is designed to be easy to use for novices ...”

PC World, January 2004

And when it comes to enhancements, Alt-N's customers really make the difference. MDAemon users provide most of the input for new and enhanced features.

Features Table

This table compares the major features of MDAemon and Exchange. It shows the equivalency in essentials between the two messaging platforms, with MDAemon having the advantages of economy, security and ease-of-use.

In the table:

X means a feature is supported.

P means a feature is partially supported.

	MDaemon	Exchange
Account Import / Export	X	
Address Book Synchronization	X	X
Address Suppression	X	X
Aliasing / Redirect	X	X
Antivirus Scanning	X	
Archiving	X	X

	MDaemon	Exchange
ATRN	X	X
Attachment Linking	X	
Auto Responders	X	X
Auto Response Exceptions		
Auto Configuration Backup	X	
Auto Gateway Creation	X	
Bind to IP	X	X
Catalogs	X	X
Command Line Execution	X	
Content Filter	X	
Deny Telnet		
Directory Locations	X	P
Disable Account	X	X
Disk Space Monitor	X	
Domain User Limits	X	X
Domain Disk Quota		X
Domain Gateways	X	
DomainPOP	X	
ESMTP	X	X
ETRN	X	X
EXPN	X	
Filter Exclusions	X	X
Global Filters	X	
Graphical User Interface	X	X

	MDaemon	Exchange
Header / Footer	X	X
Header Translation	X	P
Host Screening	X	X
IMAP	X	X
Immediate Delivery	X	X
Instant Messaging System	X	X
IP Cache	X	
IP Screening	X	X
IP Shielding	X	X
Latency / Packet Delay	X	
LDAP	X	X
Logging Options	X	X
Loop Detection and Control	X	X
Mailbox Format Files	X	P
Mailing Lists	X	X
Max Bad Commands	X	X
Max Mail Size for Lists	X	X
Max Message Size	X	X
Max Recipients	X	X
Multiple Administrator Aliases	X	X
Multiple Mail Queues	X	X
MultiPOP / Remote Accounts	X	
New User Welcome Messages	X	X
Null Account	X	

	MDaemon	Exchange
ODBC Support	X	
POP	X	X
POP Before SMTP	X	X
POP/SMTP Max connections	X	X
Port Selection	X	X
Primary Domain Switching	X	
Priority Mail	X	X
Pruning	X	
Public Calendars	X	X
Public Folder Per User Flags	X	X
Public Folders	X	X
RAS / Connection Setup	X	X
RAW Message Specification	X	
Reject if No MX Record	X	X
Reject if Reverse DNS fails	X	X
Relay Control	X	X
Remote Configuration	X	X
Require HELO/EHLO	X	X
Secondary Domains	X	X
Secure Web Mail	X	X
Server Statistics	X	X
Shared Calendars	X	X
SMTP	X	X
SMTP AUTH	X	X

	MDaemon	Exchange
SMTP Outbound Relay	X	X
SMTP Policy Banner	X	X
SyncML Server	X	
Tarpitting	X	
Trusted Hosts	X	X
Undeliverable After	X	X
Undeliverable Warning Delay	X	
User Account Defaults	X	X
VRFY	X	
Watchdog Service	X	X
Web Administration	X	
Web Mail	X	X
Web Multilanguage Support	X	X
Windows Security Integration	X	X

MDaemon Goals and Benefits

MDaemon fulfills the major goals of an email server:

- Improves communications both inside and outside of an enterprise.
- Protects users from spam and viruses.
- Secures itself against unauthorized use.

MDaemon also provides major benefits, including:

- Cost and licensing are simple, easy to understand and economical.
- Upgrade Protection is generous, economical and keeps you current with new feature and security enhancements..
- Hardware and OS support requirements are flexible and economical.
- Support by email and telephone are the best in the industry.
- IMAP, POP, SMTP, web mail and SyncML support are excellent and easy to use.
- DomainPOP is ideal for dialup server connections
- GroupWare for MDAemon is economical and supports Outlook sharing.
- Security is comprehensive, uses industry-leading features and works well.
- AntiVirus for MDAemon is economical and stops virus before they get in.
- Spam filtering is comprehensive, flexible, built-in and actually works.
- Content filtering is very flexible and can do just about anything with content.
- WorldClient webmail supports collaboration and has an excellent interface.
- Development is fast and based on customer feedback and requests.
- Alt-N is honest about bugs and fixes them rapidly.
- Simple file structure makes things easy to find, backup and restore.
- User interface provides professional controls, beginner ease-of-use
- Defaults are intelligent and secure.
- Mail logging and archives are easy to use.
- Gateways are easy to understand implement.
- Mailing lists are flexible and easy to implement.
- Improves communications both inside and outside of an enterprise.
- Protects users from spam and viruses.
- Secures itself against unauthorized use.
- Add, change and delete accounts, as you need them, for no additional cost.

- Add, change and delete secondary domains in your email server as needed.
- Archive copies of every incoming and outgoing email. This can be important for security, business and legal reasons.
- Each account can store as much email as you want. Account users can search their archives by using email clients.
- Use any email client such as Outlook, Outlook Express, Pegasus, Eudora, Mail.app and many others, plus webmail.
- Contact us with your email need and we will try to fill it fast.